

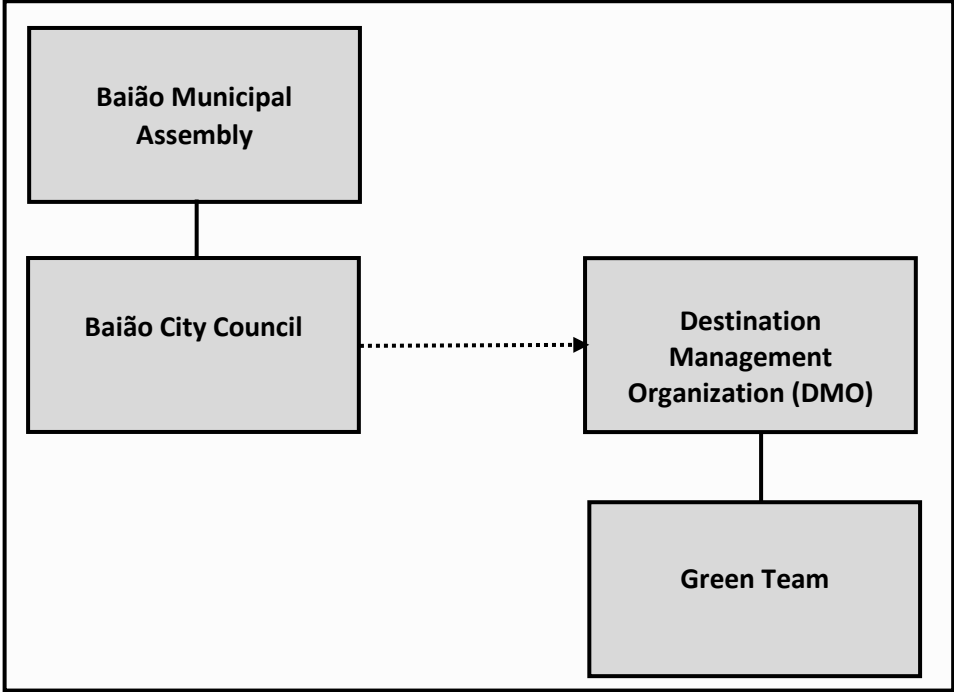


## ORGANIZATIONAL AND RESPONSIBILITIES CHART (DMO/GREEN TEAM/STAKEHOLDERS)

Responsibility at the implementation level, management and monitoring of the Project.

Delegation to a DMO that coordinate the project and will be the interlocutor with the EarthCheck and all institutions and partners relevant to the development of the Sustainable Destination Certification Project.

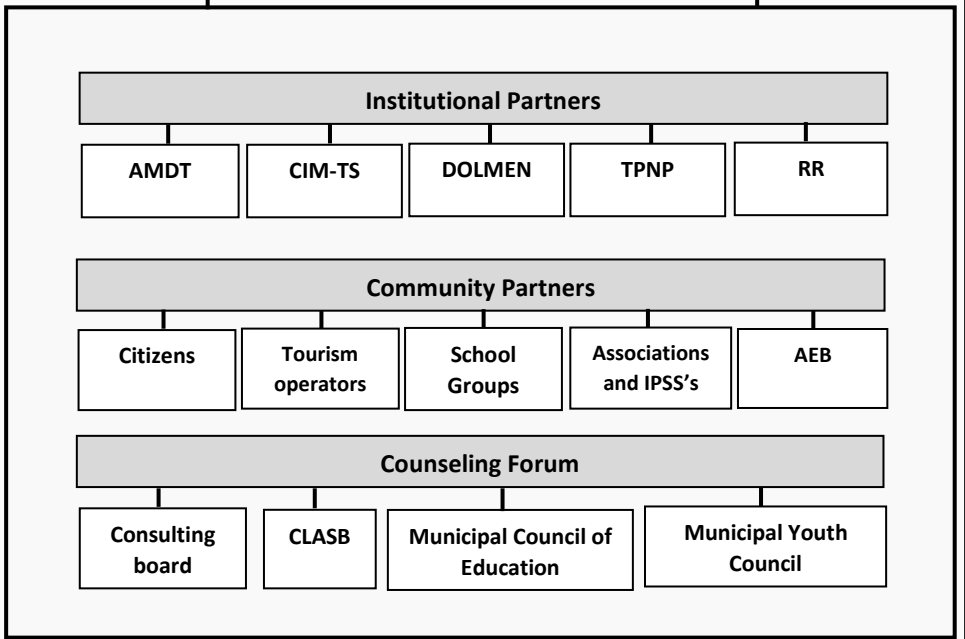
Constitution of a Green Team for development of work, involvement of the community, monitoring of execution of the Action Plan and definition of procedure for correction of any non-conformities.



**Description**  
Supramunicipal partners responsible for policies and / or actions with an impact on the municipality.

**Description**  
Key actors in the community for the empowerment and spillover of destiny.

**Description**  
Advisory bodies, made up of leading figures and institutions in the community.



**Function:**  
 Advice on the sustainability strategy and the various actions proposed, as well as those responsible for inputs.  
 Validation of the sustainability strategy recommended by the DMO / Green Team.  
 Dissemination of the results of the certification process.  
 Collaboration in the implementation and monitoring in all phases of the certification process.  
 Progress collaboration in monitoring the work and issuing inputs.  
 ECSE results monitoring related to the Environmental, Cultural, Social and Economic pillars of the Action Plan.



**ORGANIZATIONAL AND  
RESPONSIBILITIES CHART  
(DMO/GREEN TEAM/STAKEHOLDERS)**

