



OUR JOURNEY TOWARDS SUSTAINABILITY

Green is the New Destination!



| Scope Statement

Geographical Context

BAIÃO

is a northern Portuguese village in the Porto District, 45 min drive from the city of Porto. The municipality of Baião has an administrative division that comprises 14 parishes and is situated in the sub-region Tâmega and Sousa. Its territory extends from the Douro on its southern limit, to the highest point of the Marão mountain, 25 km north from Douro, with an altitude reaching from 60 to 1416 meters. Total area of the municipality is 175 km², with over 500 small settlements and about 17.534 inhabitants.

It's orography clearly influenced the structure and dispersion of the settlement. Between the Douro River and the Serra do Marão, this territory is structured on a river-facing level, linked to the installation of the Ovil River and the Teixeira River. Also noteworthy are Serra do Castelo (952 meters) and Serra da Aboboreira (965 meters).

The landscape of Baião is today the result of a distinctive structure as the man occupied and transformed into a territory over thousands of years, resulting in a landscape of great cultural value, with a strong historical heritage. The oldest occupation of this territory is concentrated in the central plateaus of the Aboboreira and Castelo mountain ranges and dates back to the most recent prehistory that spans a long chronological period of four thousand years and includes different traces. Noteworthy is the national monument "Chã da Parada I", built between the 1st and 2nd half of the 4th millennium BC, this prehistoric funerary monument still has engravings inside. But the territory is full of landmarks from several historical periods, from the Romans to the Baroque or the Pre-industrial period.



Fig. 1 - Baião: Location in Portugal, Porto District and administrative organization



Fig. 2 - Baião: Physical Features

Buildings (Owned and managed by Municipality of Baião)

Public Buildings

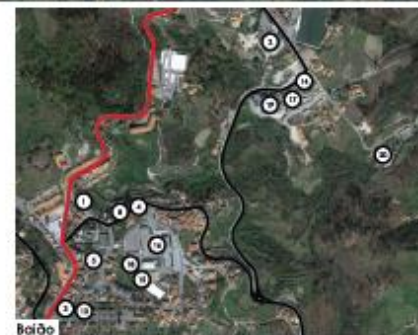
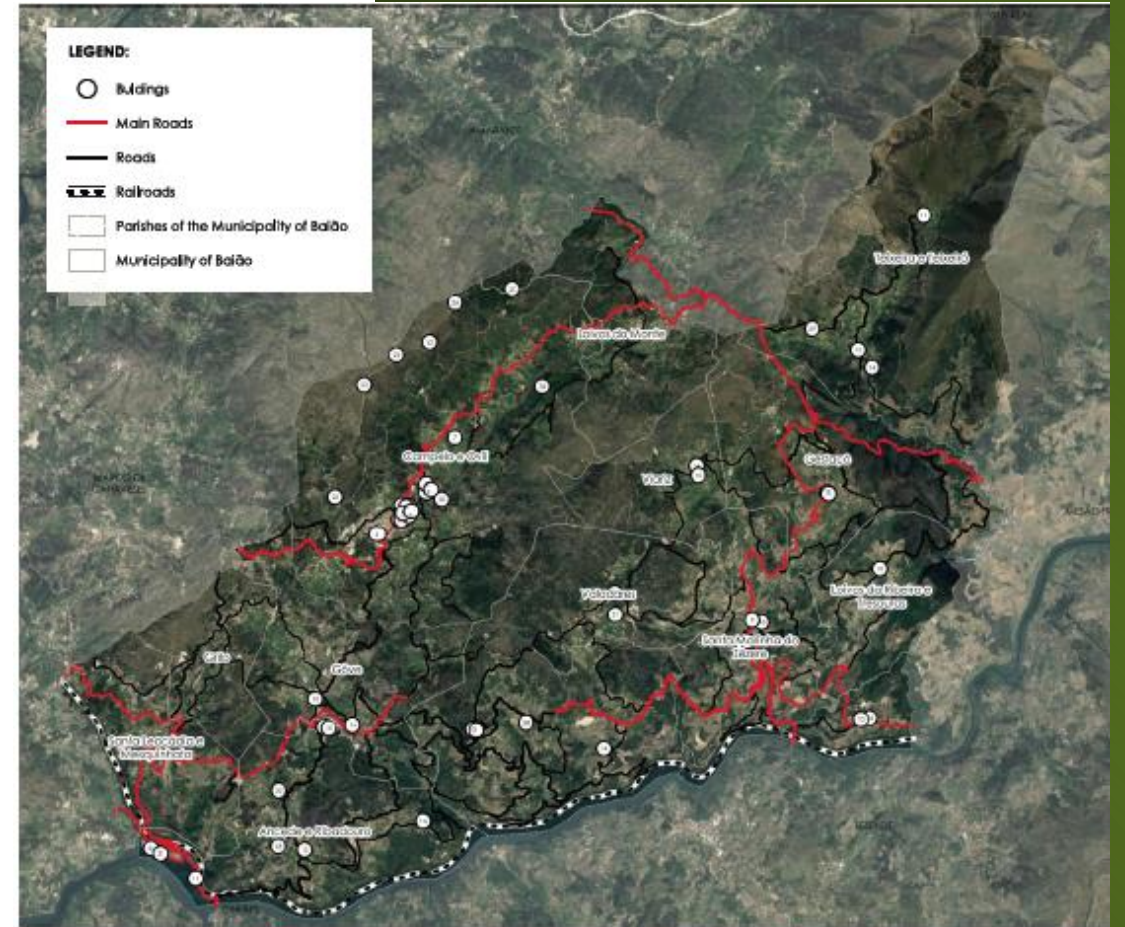
1. City Council
2. City Council: Polo II
3. Interactive Tourism Office
4. António Mota Municipal Library
5. Municipal Auditorium
6. Municipal Services of Santa Marinha do Zêzere (1)
7. Ancede Citizen Service Point (1)
8. Community Center (5)
9. Nature Lodges (in the Douro river and Marão Mountain)
10. Ancede Monastery - Cultural Center
11. Gestaçô's Walking Canes House
12. Health centres (5)
13. Industrial Park "Área de acolhimento empresarial"

Education

1. Kindergarten (10)
2. Educative Centers (5)
3. Basic and high schools (3)

Sports

1. Equestrian Center
2. Municipal Swimming Pool (1)
3. Open Air Swimming Pool (3)
4. Sports Hall (2)
5. Fluvial Parks (2 in the Ovil river)
6. Fluvial structures for recreation boats (2 in the Douro river)





Cultural & heritage aspects

Natural Life

On the slopes that connect the peak of Marão to the river Douro, marked by valleys "mightily dug", where some water courses such as those of the Douro, Ovil, and Teixeira, lies one of the greenest counties of the region (70% of forests), with an important geological patrimony and a diversity of fauna and flora and a millennial historic patrimony.

Land of Flavours

The gastronomy of Baião is so special that some say that one of the most renowned Portuguese writers, Eça de Queiroz, did not only fall in love with the landscape of this land, but also with the flavours of its traditional dishes when he wrote his novel "The City and the Mountains" in which he makes reference to the magnificent local gastronomy, describing colorfully and tastefully. Nowadays, Baião is a gastronomic reference in the region by the quality and tradition of its endogenous gastronomic process and wine production.

Ancient Land

The landscape of Baião is the result of the distinct way in which man occupied and transformed the territory over thousands of years, resulting in a landscape of great cultural value, with a strong historic heritage. The oldest occupation of this territory was in the central plateaus of the mountains of Aboboreira and Castle and date back to recent pre-historic times, which cover a long chronological period of four thousand years (5th to the 1st Millennium B.C.). But there are also historical testimonies from every historical period, from Roman occupation, to medieval times, the Baroque and French invasions.

Land of Culture

The county of Baião exhibits a richness of heritage values, striking panoramas, customs and traditions that enhance and make this region of the country unique. Important Portuguese writers such as Camilo Castelo Branco, Alves Redol, Agustina Bessa-Luís, Eça de Queiroz and António Mota, often refer to this landscape in their works. The Eça de Queiroz Foundation, the dolmens of Serra da Aboboreira, the monastery of Saint Andrew of Ancede, the enormous religious heritage, the crafts, the small museums and exhibitions centres are important touristic attractions.

Land of Adventure

The natural features of Baião, the deep valleys, the slopes, rivers incites us to embark on an adventure, with sites that inspire us, and challenge us. This is a territory with excellent conditions for the practice of sports and for the adventure.

Magic Land

in this territory of mountains and rivers – ripping the skies – a land of water, climatic phenomenons, full of life, sculptured into schist and granite, covered by the green of the forest, we walk through shades and haze, uncovering the mysteries hidden in the imagination of its people.

Attractions

- Douro River
- Ovil River
- Teixeira River
- Baião Equestrian Center
- Tresouras Church
- Valadares Church (medieval, romanic)
- Eça de Queiroz Foundation
- Gastronomy and Wine Fairs
- Ancede Monastery - Cultural Center
- Aboboreira Megalithic Complex
- Chã de Parada – Nacional Monument
- Esmoriz Romanic Bridge
- Nossa Senhora do Bom Despacho Chapel (baroque)
- Autochthonous Oak Forest of Reixela
- Ovil River ecological trail

Parks

- Aboboreira Mountain Peak // Reginal Protected Landscape of Serra da Aboboreira
- Serra do Marão // Marão Mountain Peak
- Castelo de Matos // Matos Peak

Events

Baião's main visitor and tourist attractions are its events spread throughout the year. Events are key happenings when and where Baião can engage with its visitors and show case sustainable action during events based on embedded sustainable practice. Green and sustainable events is a main pillar of Baião's sustainability journey led by the DMO and the Green Team.

Main events

- Feira do Fumeiro, do Cozido à Portuguesa e dos Vinhos de Baião // Smoked meat and wine fair
- Festival do Anho Assado e do Arroz do Forno // Roasted lamb and oven rice festival
- Festas Concelhias e de São Bartolomeu // Council and Saint Bartholomew Festivals
- Desfile Concelhio de Carnaval // Municipal Carnival Parade
- Feira do Vinho Verde e das Tasquinhas (Junta de Freguesia de SMZ) // Green wine and tavern fair (SMZ Parish Council)
- Feira Agro-Douro Verde // Agro-Douro Verde Fair
- Semana da Juventude e Festival Byonritmos // Youth Week and Byonritmos Festival
- Revolução Grisalha // Gray Revolution Festival

Uniques features pillars in the certification process



