

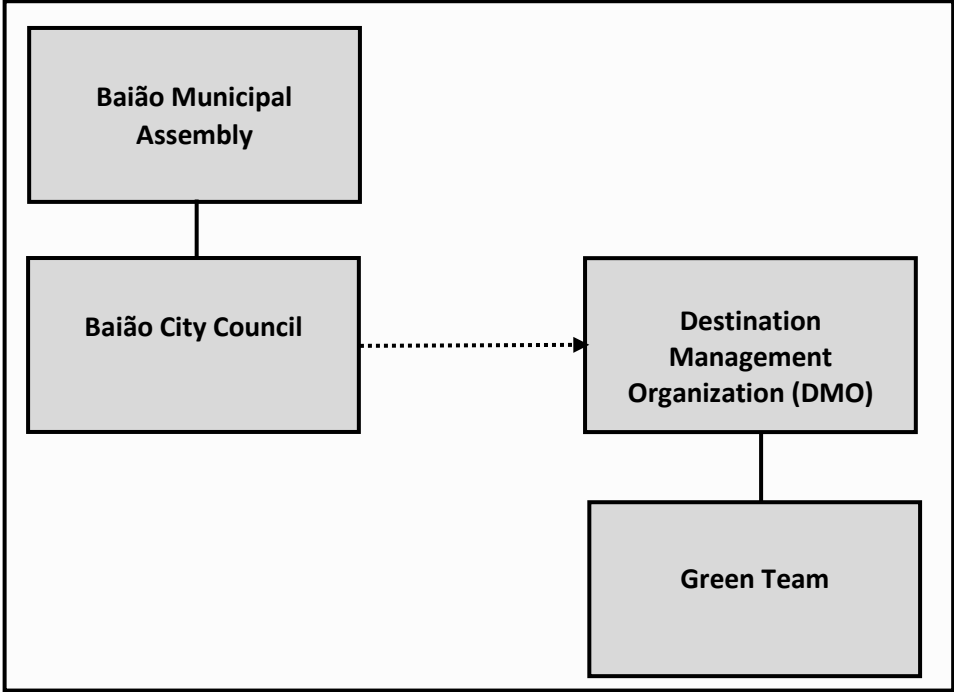


ORGANIZATIONAL AND RESPONSIBILITIES CHART (DMO/GREEN TEAM/STAKEHOLDERS)

Responsibility at the implementation level, management and monitoring of the Project.

Delegation to a DMO that coordinates the project and is the interlocutor with the EarthCheck and all institutions and partners relevant to the development of the Sustainable Destination Certification Project.

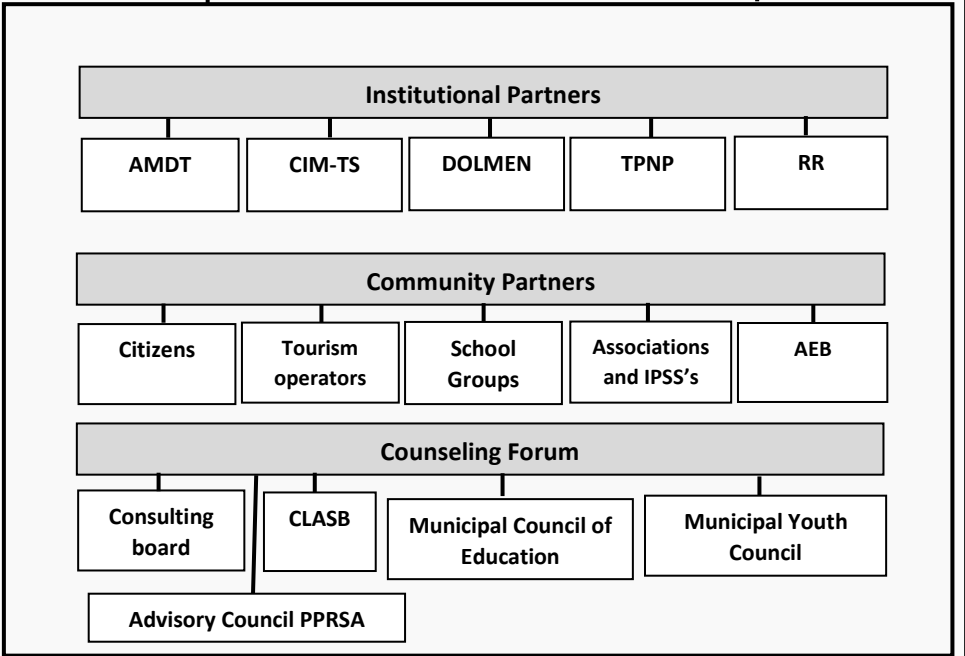
Constitution of Green Team for development of work, involvement of the community, monitoring of execution of the Action Plan and definition of procedure for correction of any non-conformities.



Description
Supramunicipal partners responsible for policies and / or actions with an impact on the municipality.

Description
Key actors in the community for the empowerment and spillover of destiny.

Description
Advisory bodies, made up of leading figures and institutions in the community.



Function:
 Advice on the sustainability strategy and the various actions proposed, as well as those responsible for inputs.
 Validation of the sustainability strategy recommended by the DMO / Green Team.
 Dissemination of the results of the certification process.
 Collaboration in the implementation and monitoring in all phases of the certification process.
 Progress collaboration in monitoring the work and issuing inputs.
 ECSE results monitoring related to the Environmental, Cultural, Social and Economic pillars of the Action Plan.



**ORGANIZATIONAL AND
RESPONSIBILITIES CHART
(DMO/GREEN TEAM/STAKEHOLDERS)**

Green Team

**Coordinator
DMO**

Municipal Technicians

School Groups (Vale de Ovil, Sudeste de Baião e Eiriz)

EcoSimbioses – Environmental and Cultural Association of the Ovil Valley

AEB - Baião Business Association

AMDT - Association of Municipalities of Douro and Tâmega

Dolmen - Training, Education and Development Cooperative

“Casa do Povo” of Santa Marinha do Zêzere

Baionense Motorcycle Club

Amigo - Gove Innovative Modalities Association

Consulting board

Tourism operators

Municipal Council of Education

Municipal Youth Council

CLASB – Local Council for Social Action of Baião

Serra da Aboboreira Regional Protected Landscape Advisory Council